



Pacific Highway Upgrade Frederickton to Eungai

**EPL Report
November 2016**

Licence #20318

Table of Contents

- 1. INTRODUCTION..... 3**
 - 1.1. Project Overview 3

- 2. REPORTABLE CONDITIONS 4**
 - 2.1. R1.9 Non-compliances with the conditions of the licence 4
 - 2.2. L2.4 and L2.5 Water and/or Land Concentration Limits..... 4
 - 2.3. L4.2 Exemptions to standard construction hours..... 4
 - 2.4. L4.3 – L4.5 Other out of hours works implemented in accordance with the Projects
Conditions of Approval 5
 - 2.5. Noise Monitoring..... 5
 - 2.6. M4.1 and M4.2 Weather Monitoring 5
 - 2.7. Air Quality..... 5

Appendices

- APPENDIX A – COMPLIANCE TABLE 6**

1. INTRODUCTION

This Environmental Protection License (EPL) Report outlines the reporting requirements specified in Condition R1.9 of the Project's EPL (#20318) as well as pollution monitoring data as required by the NSW EPA's document "Requirements for publishing pollution monitoring data" (2012).

This report is issued to the Environment Protection Authority of NSW. The report is published on the CPB Contractors website - <http://www.cpbcon.com.au/>

The Environmental Protection Licence has been issued to CPB Contractors Pty Ltd for the Frederickton to Eungai (F2E) Pacific Upgrade Project at 229 Cooks Lane, Clybucca NSW 2440. The F2E EPL is publicly available via the NSW EPA website (<http://www.epa.nsw.gov.au/prpoeoapp/Detail.aspx?instid=20318&id=20318&option=licence&searchrange=licence&range=POEO licence&prp=no&status=Issued>).

A compliance table is given in **Appendix A** which outlines what is required in this report by Condition R1.9 and the Requirements for publishing pollution monitoring data (EPA 2012) and where the requirement is addressed in this report.

1.1. Project Overview

On behalf of the Australian and NSW governments, the Roads and Maritime Services of NSW (RMS), formally known as the Roads and Traffic Authority of NSW, CPB Contractors is upgrading the Pacific Highway between Frederickton, north of Kempsey, to Eungai, near Stuarts Point Road. The Project has provided 26.5 kilometres of new dual carriageway and was opened to traffic on 16th May 2016. **Figure 1** shows the location of the Project.

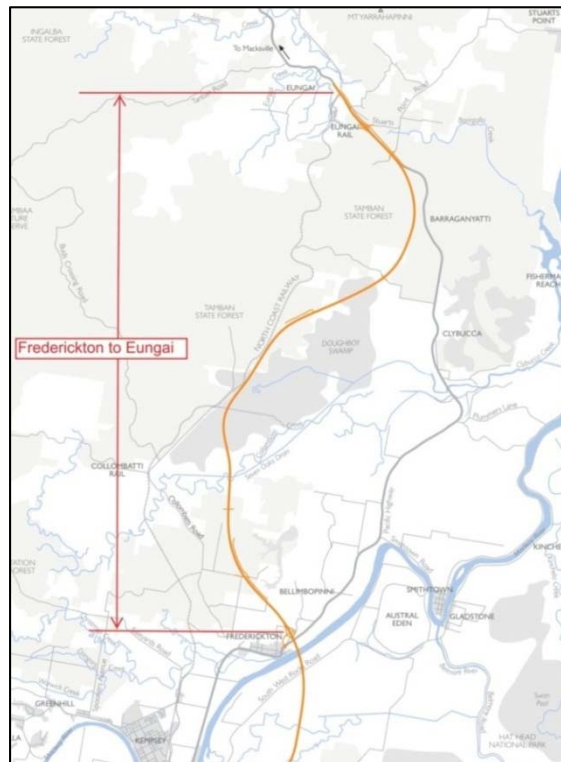


Figure 1: Frederickton to Eungai Project Area

2. REPORTABLE CONDITIONS

The following sections outline the different conditions of the Projects Licence and the status of compliance for the reporting month. Pollution monitoring data as per the NSW EPA's requirements have been added where relevant with detail on monitoring activities. Full data is presented in the Appendices.

2.1. R1.9 Non-compliances with the conditions of the licence

Condition R1.9 of the EPL requires this report to provide the following information:

- a) Details of all non-compliances with the conditions of the licence, and measures taken, or proposed, to prevent a reoccurrence of such a non-compliance; and
- b) Details of all discharges from the sediment basins where the water quality results exceed the limits prescribed by condition L2.4 including the results of rainfall measurements to demonstrate compliance with condition L2.5; and
- c) Details of the results of any acoustic investigation made in relation to L4.2.

There were no non conformances identified during the reporting period.

2.2. L2.4 and L2.5 Water and/or Land Concentration Limits

Condition L2.4 in the EPL states the water quality criteria which the Project must meet for discharge from the licenced points identified in by the licence. Condition L2.5 states that an exceedance in these limits is only permitted when discharge occurs solely as a result of rainfall measured at the premises. Rainfall must exceed the 5 day rainfall depth value for the corresponding discharge point over a consecutive 5 day period for discharge to be considered to occur solely as a result of rainfall.

In environmentally sensitive areas, basins on F2E have been designed to an 85th percentile 5-day capacity event (46mm). In non-sensitive areas, basins on F2E have been designed to an 80th percentile 5-day capacity event (36.5mm).

There were no discharge events from basins during the reporting period as all licenced discharge points have since been removed from the project licence.

2.3. L4.2 Exemptions to standard construction hours

The EPL specifies the standard construction hours for the project are:

- 7am to 6pm Monday to Friday
- 8am to 1pm Saturday

Condition L4.2 provides an exemption to the standard construction hours for works that are:

- The delivery of oversized plant or structures that require special arrangements to transport along public roads
- Emergency works to avoid the loss of lives or property or to prevent environmental harm
- Works that are not more than 5dB (A) over the background noise level.

2.4. L4.3 – L4.5 Other out of hours works implemented in accordance with the Projects Conditions of Approval

Condition L4.3 – L4.5 allows the licensee to undertake other agreed or critical out-of-hours works where it has been demonstrated to the EPA's satisfaction that:

- a) All reasonable and feasible measures have been undertaken to consult with any affected sensitive receptors on each occasion that out-of-hours works are proposed under this condition;
- b) The Environmental Representative has assessed the works to be undertaken and sign-offs on their support for the out-of-hours works;
- c) The EPA and other relevant agencies, such as Roads and Maritime Services and NSW Department of Planning have been consulted where necessary prior to proceeding with the proposed out-of-hours works;
- d) Any works undertaken under this provision are documented and reported on in the Monthly EPL Compliance Report

2.5. Noise Monitoring

There was no noise monitoring carried out during the month due to completion of mainline construction activities as a result of the project opening to traffic on 16th May 2016. Outstanding activities carried out during the month include traffic control, fencing, rectification of defects, landscaping, and rehabilitation of the main compound. Furthermore no noise complaint was received in relation to construction activities undertaken.

2.6. M4.1 and M4.2 Weather Monitoring

Monitoring of rainfall on the project has ceased since the decommissioning of all licenced discharge points from the project EPL.

2.7. Air Quality

Condition O3.1 relates to dust generation. The condition states that the operations and activities that occur at the premises must be carried out in a manner that will minimise the generation and emission of dust. Dust is monitored as per the Projects Construction Environmental Management Plan and Air Quality Management Plan.

Due to the completion of mainline construction activities in May 2016 there were no dust gauges deployed during this reporting period and no dust related complaints have been received.

APPENDIX A – COMPLIANCE TABLE

Table A-1 Compliance Table

Requirement Document	Requirement Section	Relates to what...	Addressed in which section of this report
EPL	R1.9	Non-compliance with conditions, measures taken or proposed to prevent reoccurrence	2.1
EPL	R1.9	Details of discharges from basins where the water quality results exceed the limits	2.2,
EPL	M4.1 & M4.2	Rainfall measurements to demonstrate compliance with condition L2.5	2.7,
EPL	L4.2	Details of acoustic investigation made in relation to exempt works approved under condition L4.2 (Less than background plus 5 dB(A))	2.4,
Requirements for publishing pollution monitoring data (EPA, 2012)	2	Licensee who undertake monitoring as a result of a licence condition must publish or make available monitoring data that relates to pollution within 14 days of obtaining the data and/or receiving a specific request for a copy of the data	1
	2	Licensee who maintain a website must make the monitoring data related to pollution available in a prominent position on the website	1
	3.2.1	Licensee required to publish their data on a website must include a meaningful summary of the monitoring data on at least a monthly basis	1
	3.2.1	Licensee required to publish their data on a website must include information regarding when and to what extent the pollutant discharge or emission limits specified in the licence were not met and why	2
	3.3	The monitoring data that must be published and/or made available on request is any data that is obtained as a result of a monitoring condition on a licence that relates to air, water, noise and/or land pollution. The data to be published or provided is limited to data that relates to pollutants generated, discharged or emitted from the licenced premises	2.3, 2.6, 2.8 Appendix B, C & D.